



Leanwrap™

Less Waste, Safer Loads!

Patented and patent pending innovations that overcome today's stretch wrapping challenges!



QL Automatic

Stretch Wrapping System

Loads are Harder to Wrap Than Ever!

Today's stretch wrapping challenges have spawned an epidemic of fragile and demanding loads that are harder than ever to wrap. Yesterday's technology doesn't give you the tools to know if your loads are safe to ship.

So we reinvented stretch wrapping.

Our exclusive, patented LeanWrap features give you what you need to manage the performance of your loads and overcome today's stretch wrapping challenges.

Stop breaking stretch film. Stop twisting loads. Stop loads from sliding off the pallets. Stop destructive film tails. Stop guessing if your loads are safe to ship.

Take control of your stretch wrapping.

LeanWrap technology gets you less waste and safer loads.

The right containment force applied consistently is the key to stretch wrapping success.



Good Loads

- Containment force is at or above the minimum requirement everywhere on the load.
- The load is bonded to the pallet with 3-5 inches of film rolled into a cable.
- Looks good. No long or dragging film tails.

“Good loads are safe to ship.”

Lantech®

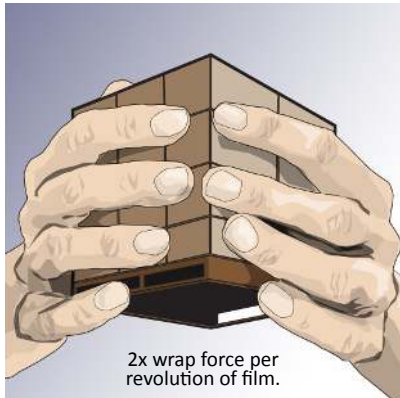
QL Automatic

Exclusive LeanWrap Innovations



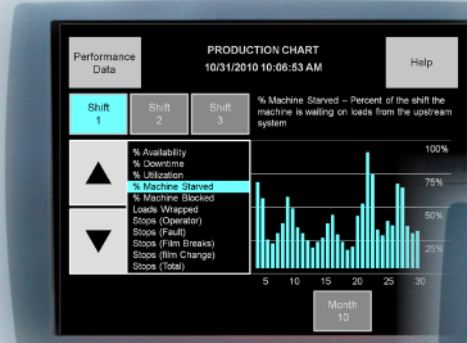
Metered Film Delivery® System

- No Load Twisting
- No Load Crushing
- No Film Breaks



Load Guardian™

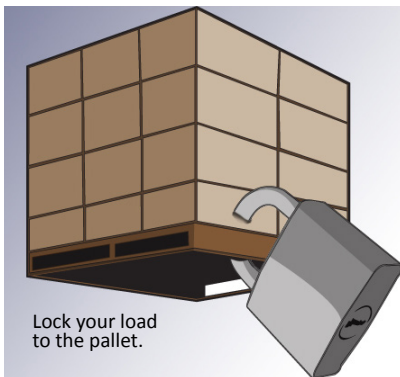
Simplifies the process of setting up a stretch wrapper to effectively wrap loads. Containment force monitoring ensures every load has the right amount of containment force. The intuitive interface has a host of other key stretch wrapping data and help screens.



Stop Guessing!

Pallet Grip®

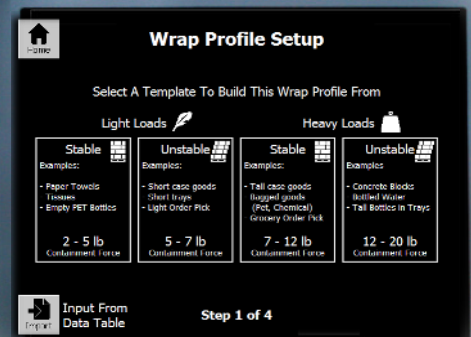
Stop loads from sliding off the pallet.



Knowledge is Power!

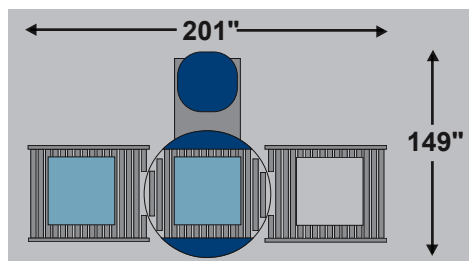
Specifications

PERFORMANCE CRITERIA	
Production Speed	30-45 loads per hour based on load height
Maximum Load Size	54"L x 48"W x 92"H
Minimum Load Size	36"L x 36"W x 24"H
Maximum Load Weight	4000 lbs.
LOAD HANDLING SYSTEM	
Turntable Drive	TEFC AC Motor,
Turntable Rotation	1-15 RPM controlled by VFD
FILM DELIVERY SYSTEM	
Film Capacity	20" web with 10" diameter
Film Cut and Clamp	Reach system with impulse hot wire cut
Pallet Grip	Standard
ELECTRICAL DATA	
Enclosure	NEMA 12, UL
Power	460VAC/3/60Hz
Control	PLC with Ethernet Communication
HMI	Touchscreen
Wiring	Pre-wired with quick connect cables
PNEUMATIC DATA	
All Requirements	3-5 CFM at 60-80 PSI
CONTAINMENT FORCE TOOL	
CFT-5 with Film Scale and Holder	
SHIPPING WEIGHT	
Machine Weight	7,250 lbs.
SERVICE SUPPORT	
Warranty	3 years unlimited cycles
Technical Support	24 hrs/7 days a week

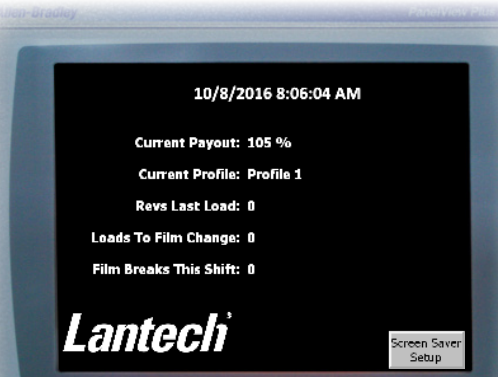


Get the Outcomes You Expect

Manage and improve your stretch wrapping with real time information about the machine's performance.



QL Automatic



Specifications subject to change without notice. Lantech systems and sub-systems are protected by U.S. and foreign patents. Additional U.S. and foreign patents pending. © Lantech

