

Label Printer Applicator ID Technology Model 255 Advanced Communications + PackML

Packaging Machine Language (PackML) defines a common approach, or machine language, for packaging machines. The primary benefits being to encourage a common “look and feel” across a plant floor, and to enable, encourage and focus on industry innovation.

The controls of ID Technology’s Model 255 Label Printer Applicator are designed to PackML standards and provide enhanced communications, using an Allen-Bradley PLC and a color touchscreen interface.



Highlights

- Allen-Bradley Controls
- Compliant with PackML standards
- Ethernet/IP and Modbus/TCP
- 5 port Ethernet switch
- On-board I/O - 28 inputs & 20 outputs
- Product tracking & encoder input
- Graphical status and diagnostic screens
- Extensive range of ID Technology application modules
- Built around ID Technology’s Centerline-Modularity™ concept

Why PackML?

PackML provides equipment manufacturers with a structured controls programming philosophy and customers with a standardized look and feel of the machine HMI (Human Machine Interface). This reduces operator training since the controls of each packaging machine are immediately familiar, with common error reporting and screen layouts.

In addition by standardizing machine mode, states and tags, PackML allows for communication between systems, both within the modules of a machine and other machines on a packaging line - regardless of the brand of controls that is used.



Why ID Technology Model 255?

Model 255 is ID Technology's PackML compliant label printer applicator.

Like all ID Technology print and apply labeling systems, it is designed on the **Centerline-Modularity™** principle. This simplifies the set up, operation and support of the equipment by eliminating as many adjustment points as possible. The result is increased uptime and lower operating costs for the customer.

The Model 255 can be equipped with any of ID Technology's wide selection of label application modules, making it capable of handling just about every conceivable labeling job.

The Model 255 can be used to label cases, pallets or most other items and can apply up to three labels per package, depending on your application.

ID Technology Model 255

Allen-Bradley Controls

The Model 255 is controlled by an Allen-Bradley Micro850® Programmable Logic Controller in conjunction with a 4.3 inch touchscreen interface.

The various screens on the touchscreen display are programmed to be compatible with PackML standards. If your company has adopted PackML for packaging equipment, the 255 is the best way to ensure you get the PackML benefits throughout your entire packaging operation.

Don't use PackML, but want Allen-Bradley integrated controls? The Model 255 is a great option for you as well. With its Micro850 controller, Ethernet/IP & Modbus communications the 255 is ready for your integration team to build into your packaging operation. Having the machine HMI designed to solid PackML principles ensures that your operators and technicians will be comfortable with interacting with the equipment.

Optional Features

Integrated barcode scanning and label inspection

Conveyor speed compensation

Product height compensation module

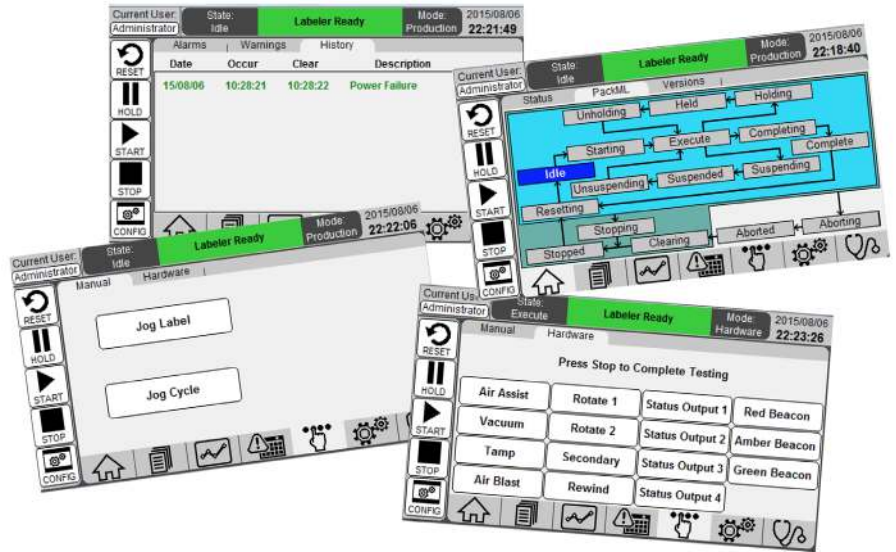
Protective enclosures for harsh environments



Controls Specifications

The ID Technology 255 is designed to provide comprehensive communications for integration with line control systems, remote monitoring and other automation systems.

It is an excellent solution for integrators, OEMs, end users needing PackML features and many others.



Model 255 display screens include PackML states and extensive diagnostics

Allen-Bradley Micro850® PLC

- 28 DC inputs, 20 sinking outputs
- Real Time clock
- Analog input (through plug-in module for optional height compensation module)
- Space for 3 additional plug-in modules
- On-board Ethernet/IP (explicit communications only) and Modbus/TCP
- On-board RS232/RS485 port (can be expanded with plug-in modules)
- Full PackML state model (2 modes, all 17 states)
- PackML PackTags including Alarms & Recipes
- Modular programming with on-screen diagnostics on all control modules
- Hardware test mode allows individual testing of all actuator

Color Touchscreen HMI

- 4.3" TFT color touchscreen
- 480 x 272 resolution, 16M colors
- 128k onboard flash
- 32 bit RISC Cortex-A8 processor at 600MHz
- 10/100 Base-T Ethernet port
- RS232/RS485 combo port
- Additional RS485 port

Which ID Technology labeling system is best for you?

We have the widest range of labeling equipment on the market today, the result of our constant innovation. Contact us today and we'll get you in touch with one of our labeling specialists, right in your area.