

BCF

Beverage Carrier Former



The mechanical design BCF horizontally forms four pack and six pack chipboard beverage carriers while achieving efficiencies in power and air usage. The BCF's inline and compact design utilizes a mechanically linked carrier pick-up and transport mechanism for precise placement through the forming cycle.

For added flexibility, the Combi BCF easily integrates with Combi case packers to pack formed carriers into cases; bottles into the carriers as well as the filled carriers into the shipping case. Combi is your single source for affordable, customized end of line packaging equipment.



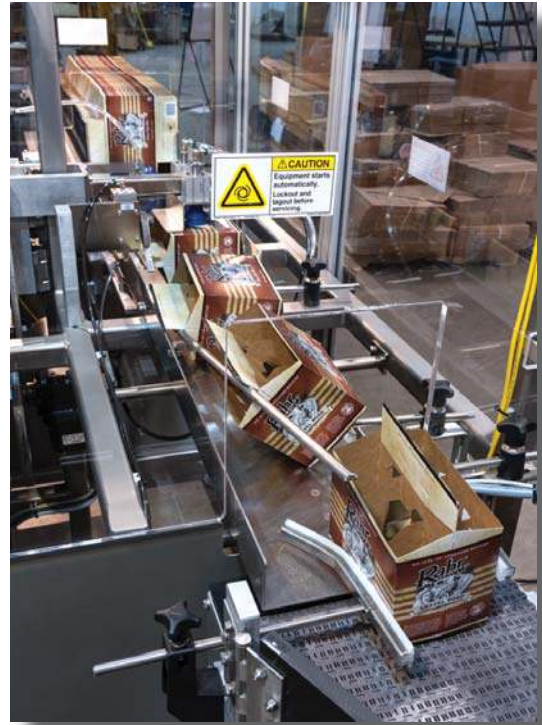
BCF Beverage Carrier Former

Sequence of Operation:

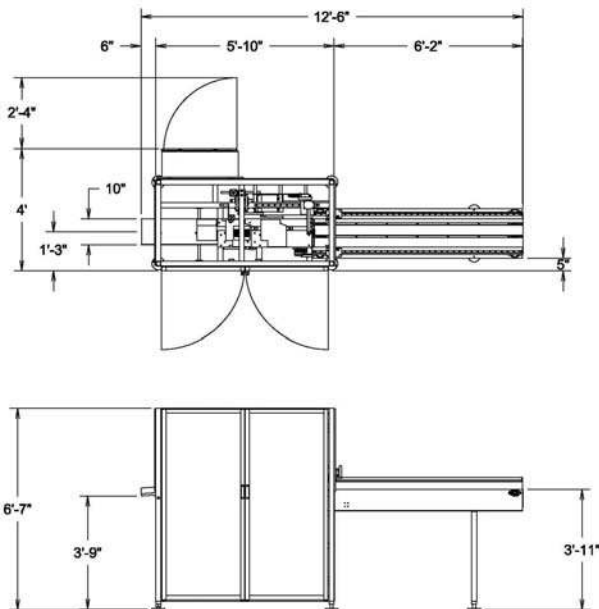
Carrier blanks are loaded vertically into power magazine. The variable speed AC drive system coupled with vacuum cups extends to pull the blank forward into a horizontal position. The cam driven opposing vacuum set up assembly applies vacuum to the top and bottom major panels, opening the carrier. The setup assembly over extends the carrier and an actuator pushes the bottom of the carrier and locks it into place. The system incorporates a carrier indexing assembly which transfers the formed carrier downstream. Carriers are then up-righted and discharged from the machine in a vertical orientation.

Electrical Requirements:

240 Volt / 3 Phase / 60 Hz



Distributed by:



Combi
Packaging Systems LLC

5365 East Center Dr. NE

Phone: 1-800-521-9072

Canton, OH 44721

Fax: 330-456-4644

www.combi.com

© 2014 Combi Packaging Systems LLC

a joint venture company with 3M and M J Maillis Group